



DUBROVAY

II. HEGEDŰVERSENY VIOLIN CONCERTO No. 2

PARTITÚRA / SCORE



EDITIO MUSICA BUDAPEST

D-106

A partitúra és a hozzá tartozó szövegműanyag az Editio Musica Budapest tulajdona, ezért csak a kölcsönszerződésben meghatározott alkalmakra használható.

Az anyagot

- másnak nem szabad továbbadni,
- engedély nélkül nem szabad másolni,
- tilos megváltoztatni, a kottába megjegyzéseket és előadói utasításokat csak grafitceruzával szabad bejegyezni,
- a kölcsönzési idő lejártáig hiánytalanul és jó állapotban kell visszajuttatni a kiadónak.

The score and the related parts are the property of Editio Musica Budapest, and therefore may be used only for the occasions specified in the loan contract.

The material

- may not be handed on to any other person or organization,
- may not be copied without permission,
- may not be altered, and any comments or performing instructions may be entered only in pencil,
- must be returned intact and in good condition to the publishers by the date of expiry of the loan period.

Ez a partitúra a Z. 14 872-es katalógusszámon megvehető.
This score can be purchased under the catalogue number Z. 14 872.

Dubrovay László

II. HEGEDŰVERSENY
VIOLIN CONCERTO No. 2

PARTITÚRA / SCORE



EDITIO MUSICA BUDAPEST

A Universal Music Publishing Classical company
H-1370 Budapest, P.O.B. 322 • Tel.: +36 1 236-1100 • Fax: +36 1 236-1101
E-mail: emb@umusic.com • Internet: www.umpemb.hu

Szeretettel ajánlom Baráti Kristófnak
Dedicated to Kristóf Baráti

ORCHESTRA

Flauto piccolo
2 Flauti
2 Oboi
Corno inglese
2 Clarinetti in Si^b
Clarinetto basso in Si^b
2 Fagotti
4 Corni in Fa
3 Trombe in Do
3 Tromboni
Tuba
3 Timpani
Percussione (3 esecutori):
Tamburo piccolo
5 Temple blocks
5 Bongos
5 Tom-toms
Gran cassa
Tamburino
4 Gongs
Tam-tam
Piatto sospeso
Piatti a2
Campanelli
Campane
Vibrafono
Celesta
Arpa
Archi

Durata: ca 23'

JELMAGYARÁZAT – KEY TO SIGNS USED



glissandók
glissandi



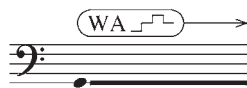
improvizált flageolet-glissando motívumok csúszással és megállással
improvised harmonic glissando motifs with sliding and stopping

con sord. 


kúp sordino
cup mute

con sord. WA

WA sordino
WA mute



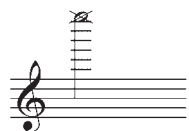
a WA sordino nyílását az ujjakkal improvizáltan, hirtelen mozdulattal nyitni–zárni
randomly and quickly, open and close the hole of the WA mute with the fingers in an improvised manner

gestopft sord. 

a gestopft sordino nyílását nyitni–zárni
open and close the hole of the “gestopft” mute

WAtr 

gyorsan nyitni–zárni
open and close quickly



a lehető legmagasabb hang (zajhang)
the highest possible pitch (noise)

II. hegedűverseny Violin Concerto No. 2

I

DUBROVAY László
(*1943)

Allegro con fuoco ♩ = 100

Flauto piccolo

Flauti 1 2

Oboi 1 2

Corno inglese

Clarineti in Sib 1 2

Clarinetto basso in Sib

Fagotti 1 2

Corni in Fa 1 2 3 4

Trombe in Do 1 2 3

Tromboni 1 2

Trombone Tuba 3

Timpani

Arpa

Violino solo

Violini I

Violini II

Viole

Violoncelli

Contrabbassi

Allegro con fuoco ♩ = 100

Allegro con fuoco ♩ = 100

mf *sempre stacc.*

mf *sempre stacc.*

mf *sempre stacc.*

mf *sempre stacc.*

mf

f

pizz. *mf*

pizz. *mf*

5

Fl.

Ob.

Cor. ing.

Cl. in Sib

Cl. b. in Sib

Cor. in Fa

Timp.

Arpa

Violino solo

Vle

Vlc.

Cb.

mf

1. Solo

mf

mf

f

arco

pizz.

arco

pizz.

arco

pizz.

mf

9

Fl.

Ob.

Cor. ing.

Cl. in Sib

Cl. b. in Sib

Cor. in Fa

Arpa

Violino solo

VI. I

VI. II

Vle

Vlc.

Cb.

1.

mf

arco

pizz.

arco

arco

pizz.

13

Fl.

Ob.

Cor. ing.

Cl. in Sib

Cl. b. in Sib

Fg. *mf* 1. Solo

Cor. in Fa 1.

Timp.

Arpa

Violino solo

VI. I

VI. II

Vle

Vlc.

Cb.

17

Fl.

Ob.

Cor. ing.

Cl. in Sib

Cl. b. in Sib

Fg.

Cor. in Fa

Timp.

Arpa

Violino solo

VI. I

VI. II

Vle

Vlc.

Cb.

mf

mf

f

ff

mf espr.

p

p

p

p

p

p

arco

p

1. Solo

div.

div.

div.

21

Picc.
 Fl. *p* *f*
 Ob. *p* *f*
 Cor. ing. *mf*
 Cl. in Sib *mf*
 Cl. b. in Sib
 Fg.
 Cor. in Fa
 Timp.
 Arpa *p* *mf*
 Violino solo *f* *mf*
 VI. I
 VI. II
 Vle
 Vlc. *mf*
 Cb.

25

Picc.

Fl.

Ob.

Cor. ing.

Cl. in Sib

Cl. b. in Sib

Fg.

Cor. in Fa

Tr. in Do

Trb.

Trb. Tuba

Arpa

Violino solo

Vi. I

Vi. II

Vle

Vlc.

Cb.

mf *f* *mf* *mf* *f* *f* *mf* *f* *p* *mf* *p* *f* *mf* *f* *f* *mf* *p*

1. a2 1. 1. 3. unis. unis.

con sord. Δ

3

29 1. a2

Fl. *p*

Ob. 1. *pp* *p*

Cor. ing. *p*

Cl. in Sib *pp* *p*

Cl. b. in Sib *pp* *p*

Fg.

Cor. in Fa 1. *p* Solo

Tr. in Do *pp*

Trb. *pp*

Trb. Tuba 3. *pp*

Violino solo *f* *mf* *f* *p*

VI. I *pp* *mf*

VI. II unis. *mf* *pp* *p*

Vle *pp* *p*

Vlc. *pp* *p*

Cb. *pp*

33

Picc. *mf* *cresc.*

Fl. *mf* *cresc.*

Ob. *cresc.*

Cor. ing. *cresc.*

Cl. in Sib *cresc.*

Cl. b. in Sib *cresc.*

Fg. *p* *p* *cresc.*

Cor. in Fa *a2* *p* *cresc.*

Tr. in Do 1. *cresc.*

Ptto sosp. *pp*

Violino solo

VI. I *mf* *cresc.*

VI. II *mf* *cresc.*

Vle (trem.)

Vlc. (trem.)

Cb. (trem.) *p* *cresc.*

allarg.

37
 Picc. *f*
 Fl. *f*
 Ob. *f*
 Cor. ing. *f*
 Cl. in Sib *f* 1. Solo *tr*
 Cl. b. in Sib *f*
 Fg. *f* a2
 Cor. in Fa *f* a2
 Tr. in Do *f* 1.
 Timp. *f p* *pp*
 Ptto sosp. *mf*
 Violino solo *ff* *p* *mf* *ff* *allarg.*
 Vl. I *f* *p* *pp* (8)
 Vl. II *fp* *pp* div.
 Vle *fp* *pp* div.
 Vlc. *fp* *pp* div.
 Cb. *fp* *pp*

41 **a tempo**

Picc. *f*

Fl. *f*

Cl. in Sib *f*

Fg. *f*

Tamb. picc. *mf*

Violino solo *f* **a tempo**

VI. I *p* *pizz.* *sf*

VI. II *p* *pizz.* *sf*

Vle *p* *sf*

Vlc. *unis. pizz.* *p* *sf*

Cb. *p* *pizz.* *sf*



45

Picc. *f*

Fl. *f*

Cl. in Sib *f*

Fg. *f*

Tamb. picc. *mf*

Violino solo *f*

VI. I *sf*

VI. II *sf*

Vle *sf*

Vlc. *sf*

Cb. *sf*

49

Cor. ing. Solo *mf*

Cl. b. in Sib Solo *mf*

Tr. in Do 1. senza sord. *fp*

Violino solo

VI. I arco *mf* arco

VI. II *mf* arco

Vle *mf* arco

Vlc. *mf*

53

Fl.

Cor. ing. *p*

Cl. in Sib *p*

Cl. b. in Sib *p*

Fg. *p*

Cor. in Fa *p* a 2 *p*

Violino solo *p*

VI. I unis. *mf*

VI. II *mf*

Vle *mf*

Vlc. pizz. *p*

Cb. arco *p*

57

Fl. *mf* 1. *mf* a2

Ob. *p*

Cor. ing. *p*

Cl. in Sib

Cl. b. in Sib *p*

Fg. *p*

Cor. in Fa

Tr. in Do *p* senza sord.

Violino solo

VI. I

VI. II *mf* unis.

Vle. (trem.)

Vlc.

Cb.

61 rit.

Picc. mf f

Fl. cresc. f

Ob. cresc. f

Cor. ing. cresc. f

Cl. in Sib a2 mf cresc. f

Cl. b. in Sib cresc. f

Fg. cresc. f

Cor. in Fa a2 mf f

Tr. in Do mf f

Trb. Tuba Tuba p cresc. mf f

Ptto sosp. tr pp mf

Arpa f p

Violino solo rit.

VI. I cresc. (trem.) f p

VI. II cresc. (trem.) f p

Vle cresc. f

Vlc. cresc. (trem.) arco f

Cb. cresc. f

a tempo

66 con sord. (WA) (.)

Tr. in Do *p* con sord. (WA) (.)

Trb. *p* con sord. (WA) (.)

Campli

Camp. *p*

Vibr. *p* Ped. *

Cel. *p* Ped. *

Violino solo **a tempo** *f*



73

Cor. in Fa

Tr. in Do (WA)

Trb. (WA)

Trb. Tuba *p* 3. senza sord.

Campli

Camp.

Vibr. * Ped. *

Cel. Ped. *

Violino solo

Vlc. *p* sul G

Cb. *p* sul G



This page of a musical score, numbered 17, covers measures 80 through 93. The score is for a large orchestra and string section. The instruments listed on the left are: Tr. in Do, Trb., Campli, Camp., Vibr., Cel., Violino solo, Cor. ing., Cl. b. in Sib, Cor. in Fa, Tr. in Do (multiple staves), Trb. Tuba, Campli, Camp., Vibr., Cel., Arpa, Violino solo, Vl. II, Vle, Vlc., and Cb. The music is written in a common time signature with a key signature of two sharps (F# and C#). Measure 80 begins with a dynamic marking of *f* and includes a 'WA' (Woodwind Attack) instruction. The Violino solo part features melodic lines with slurs and dynamics ranging from *f* to *mf*. The strings play a rhythmic pattern with a tremolo effect, marked with 'sul G' and a dynamic of *p*. The woodwinds and brass play sustained notes with various dynamics, including *p*, *mf*, and *mf* *espr.*. The score includes several first and second endings marked '1.' and '2.', and '3.' and '4.'. A large watermark 'FOR PERUSAL' is visible diagonally across the page.

101

Picc. *cresc.*

Fl. *a2 cresc.*

Ob. *a2 mf cresc.*

Cor. ing. *cresc.*

Cl. in Sib *cresc.*

Cl. b. in Sib *mf cresc.*

Fg. *a2 3 cresc.*

Cor. in Fa *a2 cresc.*

Tr. in Do *1. cresc.*

Trb. *senza sord. p cresc.*

Trb. Tuba *Tuba a2 p cresc.*

Ptto sosp. *pp*

Violino solo

VI. I *(8) cresc.*

VI. II *cresc.*

Vle *cresc.*

Vlc. *ord. mf cresc.*

Cb. *p cresc.*

108

Picc. *ff* *f*

Fl. *ff* *f*

Ob. *ff* *f*

Cor. ing. *ff* *f*

Cl. in Sib *ff* *f*

Cl. b. in Sib *ff* *f*

Fg. *ff* *f*

Cor. in Fa *f* *f*

Tr. in Do *f* *f*

Trb. *f* *f*

Trb. Tuba *f* *f*

Tamb. picc. *pp* *f*

Tom-t. *f* *mf* *f*

Ptto sosp. *f* *mf* *mf*

Violino solo *f* *ff* *f* *ff*

VI. I *ff* *p* *3*

VI. II *ff* *p* *3*

Vle *ff* *p* *3*

Vlc. *ff* *p* *3*

Cb. *ff* *p* *3*

con corda

col legno

col legno batt.

114

Picc.

Fl.

Ob.

Cor. ing.

Cl. in Sib

Cl. b. in Sib

Fg.

Cor. in Fa

Tr. in Do

Trb.

Trb. Tuba

Tamb. picc.

Tom-t.

Ptto sosp.

Violino solo

VI. I

VI. II

Vle

Vlc.

Cb.

pp

f

ff

a2

f

f

120

Picc.

Fl.

Ob.

Cor. ing.

Cl. in Sib

Cl. b. in Sib

Fg.

Cor. in Fa

Tr. in Do

Trb.

Trb. Tuba

Tamb. picc.

Tom-t.

Ptto sosp.

Violino solo

VI. I

VI. II

Vle

Vlc.

Cb.

ff

f

pp

f

p

a2

ord.

3

3

3

3

3

134

Cl. b. in Sib

Fg.

Cor. in Fa

Timp.

Tom-t.

Gr. C.

Tam-t.

Violino solo

Vlc.

Cb.



140

Fl.

Campli

Camp.

Cel.

Arpa

Violino solo

Vlc.

1. Solo

mf

p

12

pp

Do# Re Mi Fa Sol# La Si

p < >

gliss.

p

146

Ob. *mf* 1. Solo

Cor. ing. *mf* Solo

Campi

Camp.

Vibr. *p*

Cel. 12

Arpa Do \flat Sol \flat Lab *p*

Violino solo

Vlc.

||

151

Cor. ing. *p*

Vibr. *p*

Cel. 12

Arpa *p* *loco* *f* *mf* *pp* gliss. *pp*

Violino solo *pp*

156

Fl. *f*

Ob. *f* a2

Cor. ing. *f*

Cl. in Sib *f* a2

Cl. b. in Sib *f*

Fg. *f* 1.

Cor. in Fa *f*

Tr. in Do *f* 1.

Trb. *f* con sord. □

Trb. Tuba *f* con sord. □

Ptto sosp. *f* ord.

Violino solo *f*

VI. I *f* (div.) *fp*

VI. II *f* (div.) *fp*

Vle *f* (div.) *fp*

Vlc. *f* div. *fp*

Cb. *f* pizz.

160

Picc.

Fl.

Ob.

Cor. ing.

Cl. in Sib

Cl. b. in Sib

Fg.

Cor. in Fa

Tr. in Do

Trb.

Trb. Tuba

Ptto sosp.

Violino solo

VI. I

VI. II

Vle

Vlc.

Cb.

FOR PERUSAL

165

Trb.

Trb. Tuba

Timp.

Gr. C.

Violino solo

VI. I

VI. II

Vle

Vlc.

Cb.



169

Tr. in Do

Trb.

Trb. Tuba

Timp.

Temple bl.

Bong.

Tom-t.

Gr. C.

Violino solo

VI. I

VI. II

Vle

Vlc.

Cb.

con sord. Δ

con sord. Δ *f*

p

mf

f

pp

f

f

f

f

f

arco *f*

175

Tr. in Do

Trb.

Trb. Tuba

Timp.

Temple bl.

Bong.

Violino solo

VI. I

VI. II

Vle

Vlc.

Cb.

p

f

mf

ff

col legno batt.

p

f

mf

ff

180

Tr. in Do

Trb.

Trb. Tuba

Timp.

Temple bl.

Bong.

Tom-t.

Violino solo

VI. I

VI. II

Vle

Vlc.

Cb.

p

f

mf

ff

col legno batt.

p

f

mf

ff

185

Picc.

Fl.

Ob.

Cor. ing.

Cl. in Sib

Cl. b. in Sib

Fg.

Cor. in Fa

Tr. in Do

Trb.

Trb. Tuba

Timp.

Tamb. picc.

Ptto sosp.

Violino solo

VI. I

VI. II

Vle

Vlc.

Cb.

190

Picc.

Fl.

Ob.

Cor. ing.

Cl. in Sib

Cl. b. in Sib

Fg.

Cor. in Fa

Tr. in Do

Trb.

Trb. Tuba

Timp.

Tamb. picc.

Ptto sosp.

Violino solo

VI. I

VI. II

Vle

Vlc.

Cb.

p *cresc.* *f* *mf*

a2 *f* *mf*

mf

mf

mf

mf

mf

p *cresc.* *f* *mf*

a2 *f* *mf*

senza sord. *p* *cresc.* *f*

senza sord. *p* *cresc.* *f*

senza sord. *p* *cresc.* *f* *mf*

senza sord. *a2* *p* *cresc.* *f* *mf*

p *cresc.* *f*

p *cresc.* *f*

f

ff

cresc. *f* *unis.*

cresc. *f* *unis.*

cresc. *f* *unis.*

cresc. *f* *unis.*

cresc. *f* *unis.*

cresc. *f*

196

Picc.

Fl.

Ob.

Cor. ing.

Cl. in Sib

Cl. b. in Sib

Fg.

Cor. in Fa

Tr. in Do

Trb.

Trb. Tuba

Timp.

Tamb. picc.

Ptto sosp.

Violino solo

VI. I

VI. II

Vle

Vlc.

Cb.

allarg.

202

Picc.

Fl.

Ob.

Cor. ing.

Cl. in Sib

Cl. b. in Sib

Fg.

Cor. in Fa

Tr. in Do

Trb.

Trb. Tuba

Timp.

Tamb. picc.

Ptto sosp.

Violino solo

VI. I

VI. II

Vle

Vlc.

Cb.

209 **a tempo**

Ob. *mf* 1. Solo

Cl. in Sib *mf* 1. Solo

Fg. *mf* 1. Solo

a tempo
ossia

Violino solo *mf*

a tempo
pizz.

VI. I *p* div. pizz.

VI. II *p* div. pizz.

Vle *p* pizz.

Vlc. *p* pizz.

Cb. *p*



214

Cl. in Sib

Vibr. *mf* Ped. *

Arpa *mf* Solb Sol: Mi:

Violino solo *f*

VI. I *mf* div. arco

VI. II *mf* arco

Vle *mf* arco

Vlc. *mf* arco

Cb. *mf* pizz.

220

Fl. *mf*

Cl. in Sib *mf*

Cl. b. in Sib *mf*

Fg. *mf*

Vibr. *f* *mf*

Arpa *f*
Laç Mib

Violino solo *ff*

VI. I *f* *pizz.* *mf*

VI. II *f* *pizz.* *mf*

Vle *f* *mf*

Vlc. *f* *mf*

Cb. *f* *mf*

226

Fl. *p* *pp*

Cl. in Sib *p* *pp*

Cl. b. in Sib *p* *pp*

Fg. *p* *pp*

Tr. in Do con sord. WA *f*

Trb. con sord. WA *f*

Trb. Tuba con sord. WA *f* 3.

Tom-t.

Vibr. *p* *pp*

Violino solo *p* *f* *sul pont.*

VI. I *pp*

VI. II *pp*

Vle *pp*

Vlc. *pp*

Cb. *pp*

232

Ob. 1. Solo *f*

Cl. in Sib *f*

Tamb. picc. *mf*

Tom-t.

Violino solo *ff* arco *f* *ff* ord. *f* sul pont. *ff*

VI. I *f* arco *ff* col legno batt. *ord.*

VI. II *f* arco *ff* col legno batt. *ord.*

Vle *f* arco *ff* col legno batt. *ord.* unis. *ord.*

Vlc. *f* arco *ff* col legno batt. *ord.*

Cb. *f* arco *ff* col legno batt. *ord.*



237

Fl. 1. Solo *f*

Ob. *f*

Cl. b. in Sib *f*

Fg. 1. Solo *f*

Tamb. picc. *mf*

Tom-t.

Violino solo *f* *ff* ord. *f* sul pont. *ff*

VI. I *col legno* *ord.*

VI. II *col legno* *ord.*

Vle *col legno* *ord.*

Vlc. *col legno* *ord.*

Cb. *col legno* *ord.*

243

Picc. *f*

Fl. *f* *a2*

Ob. *f* *ff* *pp*

Cor. ing. *f* *ff* *pp*

Cl. in Sib *f* *ff* *pp*

Cl. b. in Sib *f* *ff*

Fg. *f* *ff*

Cor. in Fa *ff* *a2* *con sord. gestopft*

Tr. in Do *ff*

Trb. *ff*

Trb. Tuba *ff* *3.*

Tamb. picc. *f*

Tom-t. *f*

Ptto sosp. *f* *col legno*

Campli

Violino solo *f* *ff* *p* *8va*

VI. I *ff*

VI. II *ff*

Vle *ff* *div.*

Vlc. *ff* *div.*

Cb. *ff*

249

Cor. in Fa
mf
con sord. (WA)

Tr. in Do
mf
con sord. (WA)

Trb.
mf
con sord. (WA)

Trb. Tuba
mf

Camp.
p

Cel.
p

Arpa
p

Violino solo
mf
unis.

Vlc.
p

254

Picc.
Solo
p

Ob.
p

Cor. in Fa
3. *mf*

Tr. in Do
mf

Trb.
mf

Trb. Tuba
3. *mf*

Cel.
p

Arpa
loco
mf

Violino solo
mf

Vlc.
p

259 rit. -----

Picc. *pp*

Ob. *pp*

Cor. in Fa *pp*

Tr. in Do *pp* via sord.

Trb. *pp* via sord.

Trb. Tuba *pp* via sord.

Vibr. *pp* *ppp*

Cel. *pp*

Arpa *p* *pp*

Violino solo *pp* sul A

Vlc. *pp* ca 10' 45"

II

Adagio ♩ = 52

Solo

Score for measures 1-6:

- Timp.**: Trills with accents, dynamics *p*, *mf*, *pp*.
- Gr. C.**: Trills with accents, dynamics *p*, *mf*.
- Gong**: Sustained notes with accents, dynamics *p*, *pp*.
- Camp.**: Melodic line with accents, dynamics *pp*, *mf*, *mf*.



7

Score for measures 7-12:

- Timp.**: Trills with accents, dynamics *mf*, *f*, *p*, *f*, *pp*.
- Gr. C.**: Trills with accents, dynamics *mf*, *f*.
- Gong**: Sustained notes with accents, dynamics *p*, *mf*.
- Tam-t.**: Sustained notes with accents, dynamics *mf*.
- Camp.**: Melodic line with accents, dynamics *pp*, *mf*, *p*, *f*.
- Arpa**: Sustained notes, dynamics *f*.
- Cb.**: Sustained notes with accents, dynamics *f*, *p*.



13

Score for measures 13-16:

- Gong**: Sustained notes with accents, dynamics *pp*.
- Camp.**: Melodic line with accents, dynamics *pp*.
- Arpa**: Sustained notes with accents, dynamics *p*.
- Violino solo**: Melodic line with accents, dynamics *f molto espr.*, *f*.
- VI. I**: Sustained notes with accents, dynamics *pp*, marking *div. con sord.*
- VI. II**: Sustained notes with accents, dynamics *pp*, marking *div. con sord.*
- Vle**: Sustained notes with accents, dynamics *pp*, marking *div. con sord.*
- Vlc.**: Sustained notes with accents, dynamics *pp*, marking *con sord.*
- Cb.**: Sustained notes with accents, dynamics *pp*, marking *con sord.*

16

Gong

Camp.

Arpa

Violino solo

VI. I

VI. II

Vle

Vlc.

Cb.

20

Gong

Camp.

Arpa

Violino solo

VI. I

VI. II

Vle

Vlc.

Cb.

26

Cl. in Sib

Cl. b. in Sib

Violino solo

VI. I

VI. II

Vle

Vlc.

Cb.

31

Fl. *mf* *f* *p*

Cl. in Sib

Cl. b. in Sib

Fg. *mf* *f* *p*

Vibr. *pp* *sed* *

Violino solo *f*

VI. I *fp* senza sord. *f* *p*

VI. II *fp* senza sord. *f* *p*

Vle *fp* senza sord. *f* *p*

Vlc. *fp* senza sord. *f* *p*

Cb. *f* senza sord. *f* arco *p*

36

Fl. *f* *ff*

Cl. in Sib

Cl. b. in Sib

Fg. *f*

Cor. in Fa senza sord. *f*

Vibr. *sed* *

Arpa *f*

Violino solo *p*

VI. I unis. *f* *ff*

VI. II unis. *f* *ff*

Vle div. *f* *ff*

Vlc. div. *f* *ff*

Cb. *f*

40

Fl.

Ob.

Cor. ing.

Cl. in Sib

Cl. b. in Sib

Fg.

Cor. in Fa

Tr. in Do

Trb.

Trb. Tuba

Bong.

Tom-t.

Gong

Tam-t.

Arpa

Violino solo

VI. I

VI. II

Vle

Vlc.

Cb.

ff

pp

ff

pp

ff

pp

ff

pp

ff

pp

ff

pp

ff

pp

f

f

mf

p

f

ff

ff

ff

ff

45

Picc. *ff* *f*

Fl. *ff* *pp* *f*

Ob. *ff* *pp* *f*

Cor. ing. *ff* *pp* *f*

Cl. in Sib *ff* *pp* *f*

Cl. b. in Sib *f* *pp* *f*

Fg. *f* *pp* *f*

Cor. in Fa *f* *pp* *f*

Tr. in Do *f* *pp* *f*

Trb. *f* *pp* *f*

Trb. Tuba ^{a2} *f* *pp* *f*

Bong. *f*

Tom-t. *f*

Gong *mf* *f* *p*

Tam-t. *p*

Violino solo *f*

50

Picc.

Fl. (8)

Ob.

Cor. ing.

Cl. in Sib

Cl. b. in Sib

Fg.

Cor. in Fa

Tr. in Do

Trb.

Trb. Tuba a2

Timp. *f*

Bong.

Tom-t.

Gong

Violino solo *ff* *sul E*

VI. I *ff* *sempre gliss.*

VI. II *ff* *sempre gliss.*

Vle *ff* *sempre gliss.*

Vlc. *ff* *sempre gliss.*

Cb. *f*

54 ^{8va} Picc. **Libero**

Fl. *fff* *ppp*

Ob. *fff* *ppp*

Cor. ing. *fff* *ppp*

Cl. in Sib *fff* *ppp*

Cl. b. in Sib *fff* *ppp*

Fg. *fff* *ppp*

Cor. in Fa *fff* *ppp*

Tr. in Do *fff* *ppp*

Trb. *fff* *ppp*

Trb. Tuba *fff* *ppp*

Timp.

Bong.

Tom-t.

Gong

Tam-t. *ff*

Violino solo *p*

Libero

Vi. I

Vi. II

Vle

Vlc.

Cb.

a tempo

56

Tr. in Do

Trb.

Trb. Tuba

Campli

Cel.

Violino solo

VI. I

VI. II

Vle

Vlc.

(trem.)

pp tr

pp

sul G

rit.

a tempo

58

Tr. in Do

Trb.

Trb. Tuba

Campli

Vibr.

Cel.

Violino solo

VI. I

VI. II

Vle

Vlc.

ossia sul A

p

mf

con sord. div. a3

pp

con sord. div.

pp

con sord. div.

pp

con sord. div.

pp

62

Tr. in Do

Trb.

Trb. Tuba

Timp.

Tom-t.

Gong

Cel.

Arpa

Violino solo

con sord. □

p

Solo *trem.*

p

pp

p

p

pp

p

pp

p

p

pp

p

66

Tr. in Do

Trb.

Trb. Tuba

Timp.

Tom-t.

Gong

Tam-t.

Campli

Camp.

Violino solo

pp

pp

pp

pp

p < > *simile*

p

pp

pp

p

pp

ppp

p

pp

ppp

pp

pp

pp

pp

(trem.)

pp

ca 6'

III

Presto ♩ = 144

Picc.

Fl.

Ob.

Cor. ing.

Cl. in Sib

Cl. b. in Sib

Fg.

Cor. in Fa

Tr. in Do

Trb.

Trb. Tuba

Timp.

Gr. C.

Tamb.

Ptto sosp.

ff

con sord. WA

WA

WA

WA

WA WA WA WA

WA

WA

WA

WA

WA

2. WA

WA

WA

WA

WA

WA

WA

WA

WA

WA

WA

3. con sord. WA

WA

WA

WA

WA

WA

WA

WA

WA

WA

WA

Tuba con sord.

col legno

f

8

Picc.

Fl.

Ob.

Cor. ing.

Cl. in Sib

Cl. b. in Sib

Fg.

Cor. in Fa

Tr. in Do

Trb.

Trb. Tuba

Timp.

Temple bl.

Bong.

Tom-t.

Gr. C.

Ptto sosp.

Cel.

Vi. I

Vi. II

Vle

Vlc.

Cb.

1. Solo
p

f

pp

f

f

f

f

mf

senza sord. unis.
ff

senza sord. unis.
ff

senza sord. unis.
ff

senza sord. unis.
ff

ff

15

Ob.

Cor. ing.

Cl. in Sib

Cl. b. in Sib

Fg.

Cor. in Fa

Tr. in Do

Violino solo

VI. I

VI. II

Vle

Vlc.

pp

pp

pp

pp

pp

pp

mf

div.

pizz.

p

div.

pizz.

p

pizz.

p

pizz.

p

con sord. 1.

p

p

p

f

1. Solo

f

19

Picc.

Fl.

Cl. in Sib

Cl. b. in Sib

Fg.

Cor. in Fa

Tr. in Do

Violino solo

VI. I

VI. II

Vle

Vlc.

pp

pp

pp

pp

pp

f

1.

p

p

p

p

mf

f

8va

23

Picc. *f*

Fl. *mf* *f*

Ob. *p* *mf* *f*

Cor. ing. *p* *mf* *f*

Cl. in Sib *p* *mf* *f*

Cl. b. in Sib *p* *f*

Fg. *f*

Tr. in Do *p* *f*

Trb. *p* *f*

Trb. Tuba *p* *f*

Tamb. picc. *mf*

Violino solo *mf*

VI. I unis.

VI. II

Vle

Vlc.

Cb. *p* *f*

28

Picc. *f* *ff*

Fl. *mf* *f* *ff*

Ob. *p* *mf* *f* *p* *mf* *ff* *p*

Cor. ing. *p* *mf* *f* *p* *mf* *ff* *p*

Cl. in Sib *p* *mf* *f* *p* *mf* *ff* *p*

Cl. b. in Sib *p* *f* *p* *mf* *ff* *p*

Fg. *f* *ff*

Tr. in Do *p* *f* *p* *mf* *p*

Trb. *p* *f* *p* *mf* *p*

Trb. Tuba *p* *f* *p* *mf* *p*

Tamb. picc.

Temple bl. *f*

Bong. *p* *mf* *p*

Violino solo

VI. I

VI. II

Vle

Vlc.

Cb. *p* *f* *p* *mf* *p*

34

Picc. *ff* *mf*

Fl. *ff* *p* *a2*

Ob. *mf* *ff* *p* *a2*

Cor. ing. *mf* *ff* *mf*

Cl. in Sib *mf* *ff* *mf* *a2*

Cl. b. in Sib *mf* *ff* *p*

Fg. *ff* *p*

Tr. in Do *mf* *pp*

Trb. *mf* *pp*

Trb. Tuba *mf* *pp* *a2* *3.*

Temple bl. *f* *p*

Bong. *mf*

Tom-t. *pp*

Violino solo

VI. I arco *p*

VI. II arco *p*

Vle div. arco *p*

Vlc. arco *p*

Cb. *mf* *p*

39

Picc. *f*

Fl. *f*

Ob. *f* *p*

Cor. ing. *f* *p*

Cl. in Sib *f* *p* 1.

Cl. b. in Sib *f* *fp*

Fg. *f* *p*

Cor. in Fa senza sord. 1. *fp*

Tr. in Do *f*

Trb. *f* 1. *fp*

Trb. Tuba *f*

Temple bl. *f*

Tom-t. *f*

Arpa *ff*

Violino solo *f* *ff* *mf*

VI. I *f*

VI. II *f*

Vle *f*

Vlc. *f*

Cb. *f*

44

Picc. *pp*

Fl. *pp*

Cl. in Sib *pp*

Cl. b. in Sib *pp*

Fg. *f* a2

Cor. in Fa

Trb. *f*

Trb. Tuba *f*

Timp. *f*

Tamb. picc. *pp*

Arpa *f*

Violino solo *mf* *ff*

Vi. I *pp* div. *pp* unis. *p*

Vi. II *pp* *p* simile

Vle *pp* *p* simile

Vlc. *f* *fp* *p* sul pont. *pizz.* simile

Cb. *f* *fp* *p*

50

Cl. in Sib *sf*

Trb. *mf* 1. 2. senza sord.

Tamb. picc. *pp* *pp*

Violino solo *mf*

Vi. I

Vi. II

Vle

Vlc.

Cb.

55

Fl.

Cl. in Sib

Trb.

Tamb. picc.

Violino solo

Vi. I

Vi. II

Vle

Vlc.

Cb.

f

mf *f*

ff

mf

mf

mf

mf

mf

mf

60

Picc.

Fl.

Ob.

Cl. in Sib

Cl. b. in Sib

Fg.

Tamb. picc.

Ptto sosp.

Violino solo

Vi. I

Vi. II

Vle

Vlc.

Cb.

p

mf *p* *p*

mf *p*

mf *p*

p

p

ord. *p*

p

p *div.*

p *div.*

p *div. ord.*

p *arco*

p

65

Picc. *pp*

Fl. *pp*

Ob. *pp*

Cl. in Sib *pp*

Cl. b. in Sib *pp*

Fg. *pp* *p*

Cor. in Fa *p*

Tr. in Do *fp* con sord. Wat

Ptto sosp. *pp*

Vibr. *p* *ped.*

Cel. *p*

Arpa *p*

Violino solo *dim.* *p* *f*

VI. I *pp*

VI. II *pp*

Vle *pp*

Vlc. *pp*

Cb. *pp*

71

Fg. *p* 1. *p*

Cor. in Fa

Tr. in Do

Vibr.

Arpa *f* loco * *f* Do# Re# Mi# Fa# Sol# La# Si#

Violino solo *p* *mf*

VI. I col legno batt. div. *p*

VI. II col legno batt. *p*

Vle col legno batt. *p* unis.

Vlc. col legno batt. *p*

Cb. *p*

75

Picc. *p* *f* *p*

Fl. *p* *f* *p*

Ob. *p*

Cor. ing. *p*

Cl. in Sib *p* 1. *p* *t*

Cl. b. in Sib *p* *p* *t*

Fg. *p* 1. *p*

Temple bl. *f*

Arpa *p* gliss. gliss. *p* Do# Mi# La#

Violino solo *f* *mf*

VI. I

VI. II

Vle

Vlc.

Cb.

80

Picc. *f* *ff* *ff* *ff*

Fl. *f* *ff* *ff* *ff*

Ob. 1. *p* *ff*

Cor. ing. *p* *ff*

Cl. in Sib *ff*

Cl. b. in Sib *ff*

Fg. *ff*

Cor. in Fa *p* *ff*

Tr. in Do *ff* senza sord.

Trb. *ff*

Trb. Tuba *ff* senza sord.

Temple bl. *f*

Tom-t. *f*

Arpa

Violino solo *f* *mf*

VI. I *ff* unis.

VI. II *ff*

Vle *ff*

Vlc. *p* sul pont. *ff*

Cb. *p* sul pont. *ff*

85

Picc. *ff*

Fl. *ff*

Ob. 1. *p* *ff*

Cor. ing. *p* *ff*

Cl. in Sib *ff*

Cl. b. in Sib *ff*

Fg. *ff*

Cor. in Fa *p* *ff*

Tr. in Do *ff*

Trb. *ff*

Trb. Tuba *ff*

Tom-t. *f*

Violino solo *mf*

VI. I *ff*

VI. II *ff*

Vle *ff*

Vlc. *p* *ff*

Cb. *p* *ff*

89

Tamb. picc. *pp* *cresc.*

Violino solo *mf* *cresc.*

VI. I *p* *cresc.*

VI. II *p* *cresc.*

Vle *p* *cresc.*

Vlc. *div. ord.* *p* *cresc.*

Cb. *ord.* *p* *cresc.*

93

Picc. *p*

Fl. *p*

Ob. *p*

Cor. ing. *p*

Cl. in Sib *p*

Cl. b. in Sib *p*

Fg. *p*

Cor. in Fa *p* 2.

Tr. in Do
con sord. □ *p*

Trb.
1. con sord. WA
2. con sord. □ *p*

Trb. Tuba
con sord. □ *p*

Tamb. picc. *mf*

Violino solo *f* *mf* *f* *mf* 8va⁼⁼

VI. I *f*

VI. II *f*

Vle *f*

Vlc. *f*

Cb. *f*

97 rit. ----- Meno mosso ♩ = 120

Picc.

Fl. 1. Solo *p*

Ob. *f*

Cor. ing. *f*

Cl. in Sib

Cl. b. in Sib

Fg. 1. Solo *f* *p*

Cor. in Fa 11.2. *f* *pp* con sord. (gestopft)

Trb. 1. *f* *pp* *WAB*

Vibr. *pp* *pp* * *pp* * simile

Cel. *pp* *pp* * *pp* * simile

Arpa *f* *p*

Violino solo *f* *p*

rit. ----- Meno mosso ♩ = 120

VI. I sul pont. (trem.) div. a3 *pp*

VI. II sul pont. (trem.) *pp*

Vle sul pont. (trem.) *pp*

Vlc. sul pont. (trem.) *pp*

104

Picc.

Fl.

Cl. in Sib

Fg.

Cor. in Fa

Trb.

Trb. Tuba

Vibr.

Cel.

Arpa

Violino solo

Vi. I

Vi. II

Vle

Vlc.

1.

p

p

p

Do# Re# Mi# Fa# Sol# La# Si#

f

gliss.

gliss.

p

mf

mf

110

Picc.

Vibr.

Cel.

Violino solo

Vi. I

Vi. II

Vle

Vlc.

ord.

ord.

ord.

ord.

115

Picc.

Cor. ing.

Cl. in Sib

Cl. b. in Sib

Fg.

Cor. in Fa

Trb.

Trb. Tuba

Campli

Vibr.

Cel.

Arpa

Violino solo

VI. I

VI. II

Vle

Vlc.

Cb.

p

p

p

p

p

1.

p

via sord.

2. Solo

mf

p

p

p

p

f

gliss.

gliss.

p

(8)

mf

mf

p

p

p

string. - - - - -

128

Picc.

Fl.

Ob.

Cor. ing.

Cl. in Sib

Cl. b. in Sib

Fg.

Cor. in Fa

Tr. in Do

Trb.

Trb. Tuba

Tamb. picc.

Ptto sosp.

VI. I

VI. II

Vle

Vlc.

Cb.

string. - - - - -

a tempo

135

Picc. *ffp* *ff*

Fl. *ffp* *ff*

Ob. *ffp* *ff*

Cor. ing. *ffp* *ff*

Cl. in Sib *ffp* *ff*

Cl. b. in Sib *ffp* *ff*

Fg. *ffp* *ff*

Cor. in Fa *ff* *p* *ff*

Tr. in Do *ff* *p* *ff*

Trb. *ffp* *ff*

Trb. Tuba *ffp* *ff*

Timp. *pp* *gliss.* *mf* *pp*

Tamb. picc. *f*

Gr. C. *f*

Ptto sosp. *p* *f*

a tempo

Violino solo *p*

a tempo

(8) *(trem.)* *ff* *p* *ff*

VI. I *(trem.)* *ff* *p* *ff*

VI. II *(trem.)* *ff* *p* *ff*

Vle *(trem.)* *ff* *p* *ff*

Vlc. *(trem.)* *ff* *p* *ff* *sul pont.* *pp*

Cb. *(trem.)* *ff* *p* *ff*

142

Ob. *pp* *p*

Cor. ing. *pp* *p*

Cl. in Sib *pp* *p*

Fg. *pp* *p*

Timp. *mf* *simile*

Bong. *pp* *p*

Violino solo *f* *mf* *f*

Vle *p* sul pont.

147

Cor. in Fa *p* *f*

Tr. in Do *p* *f* (Flutterz.)
con sord. WA

Trb. *p* *f* (Flutterz.)
con sord. WA

Trb. Tuba *p* *f* (Flutterz.)
con sord. WA 3.

Timp. *f*

Violino solo *ff*

VI. I *mf* *f* *mf* *f*

VI. II *mf* *f* *mf* *f*

Vle *p* *f* div. (trem.)

Vlc. *p* *f*

Cb. *f* div.

154

Picc.

Fl.

Cl. in Sib

Cl. b. in Sib

Cor. in Fa

Tr. in Do

Trb.

Trb. Tuba

Arpa

Violino solo

pp

pp

pp

mf

f

pp

pp

f

mf \rightarrow *p*

p

p

gliss.

161

Fl.

Fg.

Temple bl.

Vibr.

Cel.

Violino solo

Vlc.

f

f

mf

p

p

p

f

p

ord. unis.

165

Fl. *p* *f*

Fg. *p* *f*

Temple bl. *pp* *mf*

Vibr.

Cel.

Violino solo *p* *f*

Vlc.

169

Picc.

Fl. *p* *mf* *f*

Ob. *mf* *mf* *f*

Cor. ing. *mf* *f*

Cl. in Sib *p* *f*

Cl. b. in Sib *p* *f*

Fg. *p* *f*

Cor. in Fa *p* *f*

Temple bl. *p* *mf*

Bong. *p* *mf*

Arpa *mf*

Violino solo *f*

VI. I unis. *p* *f*

VI. II *p* *f*

Vle *p* *f*

Vlc. *p* *f*

Cb. *p* *f*

173

Picc.

Fl.

Ob.

Cor. ing.

Cl. in Sib

Cl. b. in Sib

Fg.

Cor. in Fa

Temple bl.

Bong.

Ptto sosp.

Arpa

Violino solo

VI. I

VI. II

Vle

Vlc.

Cb.

p *mf* *f* *fp*

p *mf* *f*

p *mf* *f*

p *mf* *f* *fp*

p *mf* *f* *fp*

p *mf* *f* *fp*

p *mf* *f* *fp*

178

Ptto sosp.

Violino solo

VI. I

VI. II

Vle

Vlc.

Cb.

cresc. *f*

cresc. *f*

cresc. *f*

cresc. *f*

cresc. *f*

cresc. *f*

Libero

Cadenza Libero sul G

ff

Libero

Violino solo

col legno (battuto) sul D

mf *p* *ff* *p* *f*

arco

pizz.

p *f*

accel. *rit.*

Violino solo *arco* *pp* *ff* *p* *rit.*

Presto ♩ = 144
182

Picc. *f*

Fl. *f*

Ob. *a2* *f*

Cor. ing. *f*

Cl. in Sib *a2* *f*

Cl. b. in Sib *f*

Fig. *f*

Cor. in Fa *f*

Tr. in Do *f* con sord. □ (Flutterz.)

Trb. *f* con sord. □ (Flutterz.)

Trb. Tuba *f* Tuba 3. con sord. □ (Flutterz.)

Timp. *f*

Temple bl. *f* muta in Vibr.

Bong. *f*

Tamb. *f*

allarg.

Presto ♩ = 144

Violino solo *f* *ff* *f* *ff*

VI. I *f*

VI. II *f* unis. *f* div.

Vle *f*

Vlc. *f*

Cb. *f*

